



College/Career Readiness



Innovative Approaches

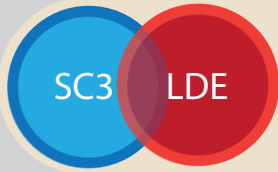


Highly Effective Teachers/Leaders

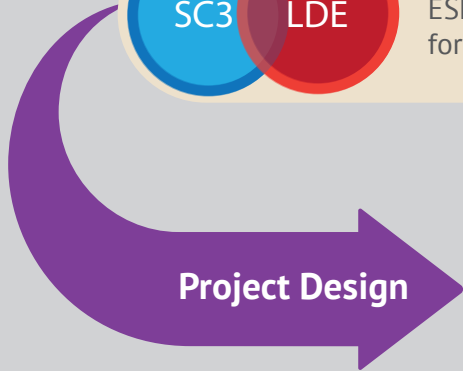
ESL Language Coaches Model Pilot

The Need

An increasing number of English learners (ELs) in Louisiana and a shortage of educators with formal education in instructional strategies to support ELs is leading to inequitable access to excellent instruction for ELs.



LDE and SC3 partnered to prepare ESL teachers to become language coaches for general education classroom teachers.



Project Design

- Needs Assessment including surveys and student data
- Strategic Plan with specific time lines
- Consultant with nationally recognized coaching expertise

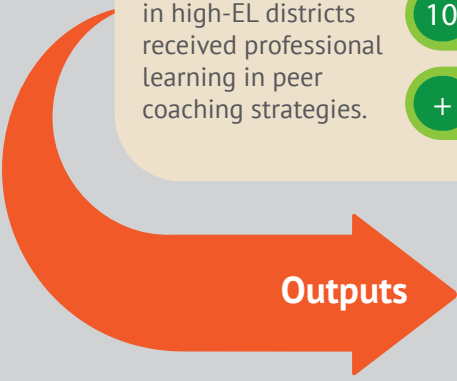


Project Delivery

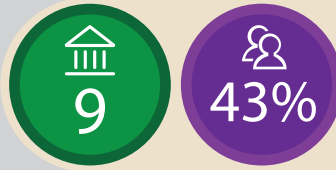


Over 70 educators in high-EL districts received professional learning in peer coaching strategies.

- 4 Face-to-face 2-day professional learning sessions (Human capacity)
- 3 On-site 1-on-1 coaching feedback visits (Human capacity)
- 10 Webinars recorded (Material capacity)
- + Monthly Community of Learners sessions (Organizational capacity)



Outputs



In 2016-2017, 9 districts, representing 43% of Louisiana's ELs, are piloting the ESL Coaches Model to improve instruction for EL students.

Expected Results

Implementation of the evidence-based ESL Coaches Model is expected to provide teachers with instructional strategies to improve language and content literacy for ELs in general education classrooms and lead to more ELs graduating ready for college and careers.

The South Central Comprehensive Center at the University of Oklahoma is funded by the U.S. Department of Education. The contents of this infographic were developed under a grant from the Department of Education. However, those contents do not necessarily represent the policy of the Department of Education, and you should not assume endorsement by the Federal Government. © 2019 University of Oklahoma

For more information, please contact us at contact@sc3ta.org or call 1.800.228.1766. www.sc3ta.org

